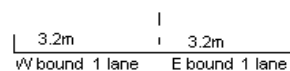
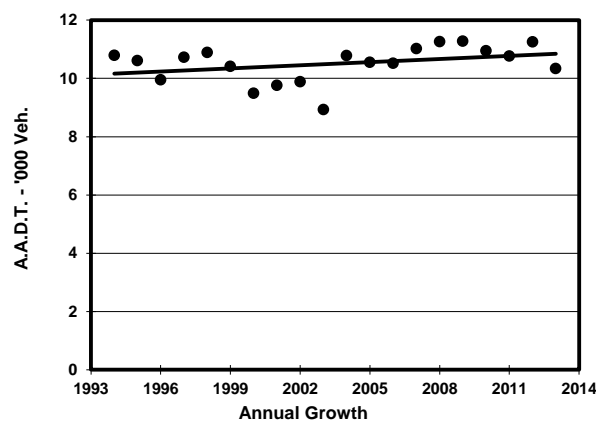
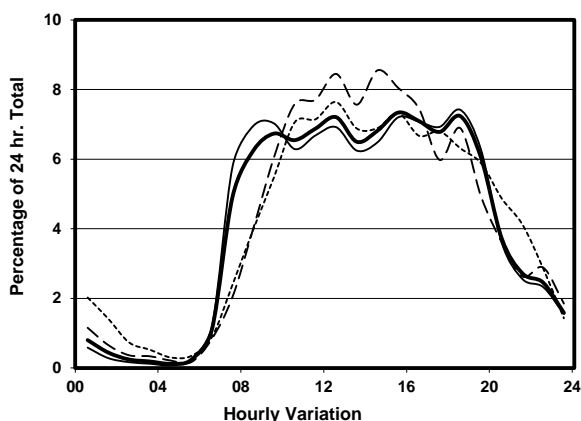
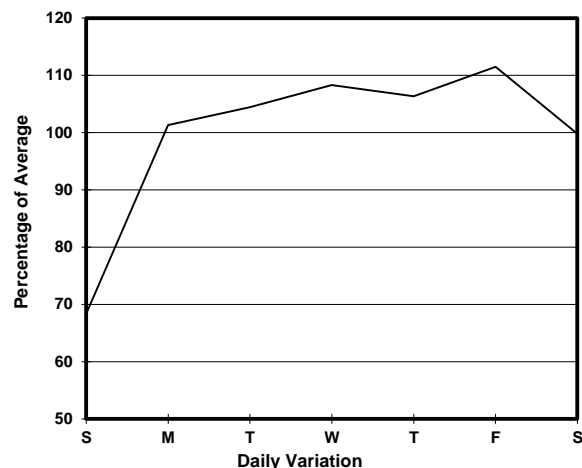
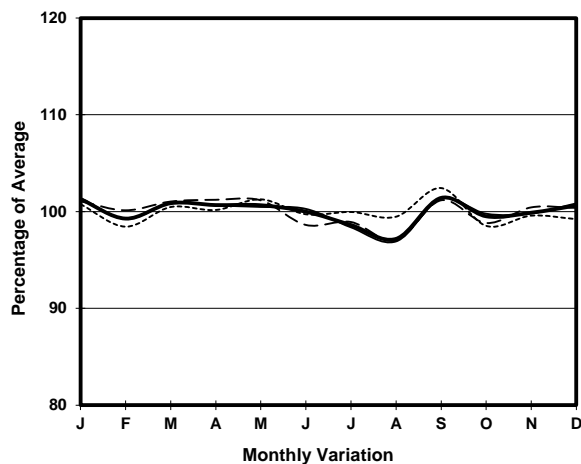


YEAR 2013
 COVERAGE (B) STATION 2213
 ROAD NETWORK MAJOR
 ROAD TYPE DISTRICT DISTRIBUTOR

LINK KENNEDY RD (from MACDONNELL RD to QUEEN'S RD E)



1. TRAFFIC FLOW VARIATION AND GROWTH



2. TRAFFIC CHARACTERISTICS (BY DIRECTION)

Parameter	All - Day	Mon. - Fri.	Sat.	Sun.
EAST BOUND				
A.A.D.T.	7080	7640	7390	4810
R 12 / 24 - %	80.5	80.9	81.1	75.6
R 16 / 24 - %	95.4	95.9	94.5	92.3
AM Peak Hour	0900-1000	0900-1000	0900-1000	0900-1000
One-way flow at AM peak hour	470	530	450	270
T - % (AM)	-	3.6	-	-
PM Peak Hour	1600-1700	1800-1900	1600-1700	1600-1700
One-way flow at PM peak hour	520	560	570	320
T - % (PM)	-	0.7	-	-
Prop.of commercial vehicles - 16 hr.	-	3.3	-	-
WEST BOUND				
A.A.D.T.	3260	3560	3110	2390
R 12 / 24 - %	80	81.3	78.5	72.6
R 16 / 24 - %	95	95.4	94.1	92.5
AM Peak Hour	0900-1000	0900-1000	0900-1000	0900-1000
One-way flow at AM peak hour	220	260	180	120
T - % (AM)	-	1.4	-	-
PM Peak Hour	1800-1900	1800-1900	1800-1900	1700-1800
One-way flow at PM peak hour	240	270	240	180
T - % (PM)	-	-	-	-
Prop.of commercial vehicles - 16 hr.	-	3.1	-	-

3. OTHER INFORMATION AND COMMENT

4. Vehicle classification and occupancy - Monday to Friday

Time		Class of vehicle									
		Motor	Private	Taxi	Private	PLB	Goods veh.		Non	Fr. Bus	
		Cycle	Car		LB		Light	M & H	Fr. Bus	SD	DD
0700-0800	Pro	1.0	26.7	28.6	16.2	8.6	7.6	1.0	10.5	0.0	0.0
	Ocp	1.0	1.4	1.6	7.5	5.8	1.9	1.0	13.0	0.0	0.0
0800-0900	Pro	0.5	67.0	16.8	3.7	3.1	4.7	0.5	3.7	0.0	0.0
	Ocp	1.0	1.4	2.0	6.7	7.2	2.2	1.0	8.4	0.0	0.0
0900-1000	Pro	0.9	57.4	23.4	2.1	2.6	10.6	0.4	2.6	0.0	0.0
	Ocp	1.0	1.4	1.7	3.4	5.7	2.0	1.0	2.8	0.0	0.0
1000-1100	Pro	1.1	50.0	30.0	2.6	1.6	12.1	1.1	1.6	0.0	0.0
	Ocp	1.0	1.4	1.7	1.6	10.0	2.3	2.0	2.0	0.0	0.0
1100-1200	Pro	2.2	50.3	22.3	1.7	2.8	16.8	2.8	1.1	0.0	0.0
	Ocp	1.3	1.3	1.7	3.0	6.2	1.8	1.8	2.0	0.0	0.0
1200-1300	Pro	1.2	55.0	22.2	3.5	2.9	11.1	0.6	3.5	0.0	0.0
	Ocp	1.0	1.6	2.0	3.2	12.0	1.8	2.0	7.3	0.0	0.0
1300-1400	Pro	2.6	52.9	27.0	3.7	2.6	10.1	1.1	0.0	0.0	0.0
	Ocp	1.0	1.5	1.8	5.6	9.4	1.7	1.5	0.0	0.0	0.0
1400-1500	Pro	0.5	60.7	25.1	1.1	2.7	7.7	0.0	2.2	0.0	0.0
	Ocp	1.0	1.6	1.5	1.0	5.8	2.0	0.0	3.5	0.0	0.0
1500-1600	Pro	2.2	53.5	22.7	3.8	2.2	11.4	0.5	3.8	0.0	0.0
	Ocp	1.0	1.5	2.0	4.1	12.8	2.0	1.0	12.3	0.0	0.0
1600-1700	Pro	2.2	57.0	21.8	2.8	0.6	10.1	0.6	5.0	0.0	0.0
	Ocp	1.0	1.7	2.5	3.6	17.0	1.8	1.0	1.1	0.0	0.0
1700-1800	Pro	1.1	56.1	30.0	2.2	2.2	5.0	0.0	3.3	0.0	0.0
	Ocp	1.5	1.4	1.9	5.3	10.8	1.8	0.0	2.3	0.0	0.0
1800-1900 Peak hour	Pro	2.5	64.6	24.7	1.0	1.5	5.1	0.0	0.5	0.0	0.0
	Ocp	1.2	1.5	2.1	14.0	16.0	1.5	0.0	5.0	0.0	0.0
1900-2000	Pro	3.2	61.3	31.2	0.0	1.1	1.1	0.5	1.6	0.0	0.0
	Ocp	1.0	1.5	2.1	0.0	17.0	1.5	1.0	4.7	0.0	0.0
2000-2100	Pro	1.6	68.9	23.0	0.0	2.5	0.8	0.0	3.3	0.0	0.0
	Ocp	1.0	1.4	2.2	0.0	9.0	1.0	0.0	6.3	0.0	0.0
2100-2200	Pro	2.6	55.3	39.5	0.0	2.6	0.0	0.0	0.0	0.0	0.0
	Ocp	1.0	1.5	2.0	0.0	12.5	0.0	0.0	0.0	0.0	0.0
2200-2300	Pro	1.6	54.7	42.2	0.0	1.6	0.0	0.0	0.0	0.0	0.0
	Ocp	1.0	1.6	1.9	0.0	17.0	0.0	0.0	0.0	0.0	0.0
16 hours	Pro	1.7	56.4	25.7	2.7	2.4	7.9	0.6	2.6	0.0	0.0
	Ocp	1.1	1.5	1.9	5.2	9.2	1.9	1.5	6.4	0.0	0.0

Legend

Pro. Proportion of vehicles in % (Sum may not add up to 100% due to figure rounding)
Ocp. Average occupancy of vehicles
M&H Medium and Heavy